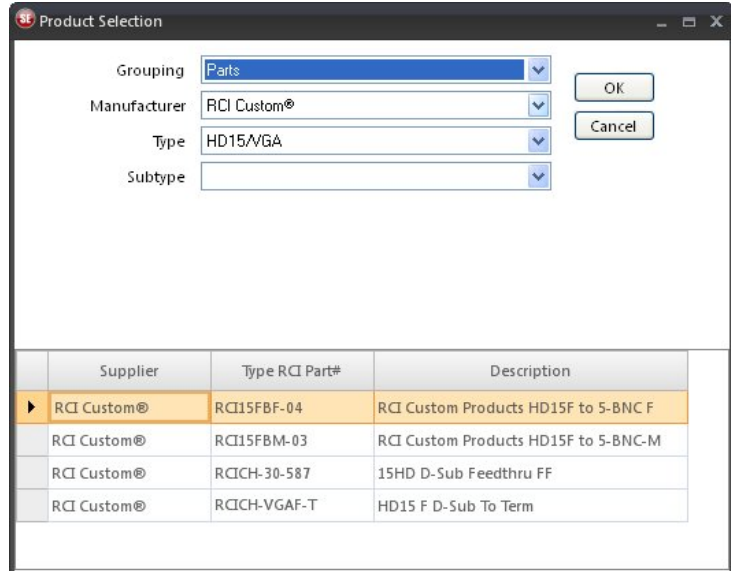


PanelBuilder SE Quick Start Guide

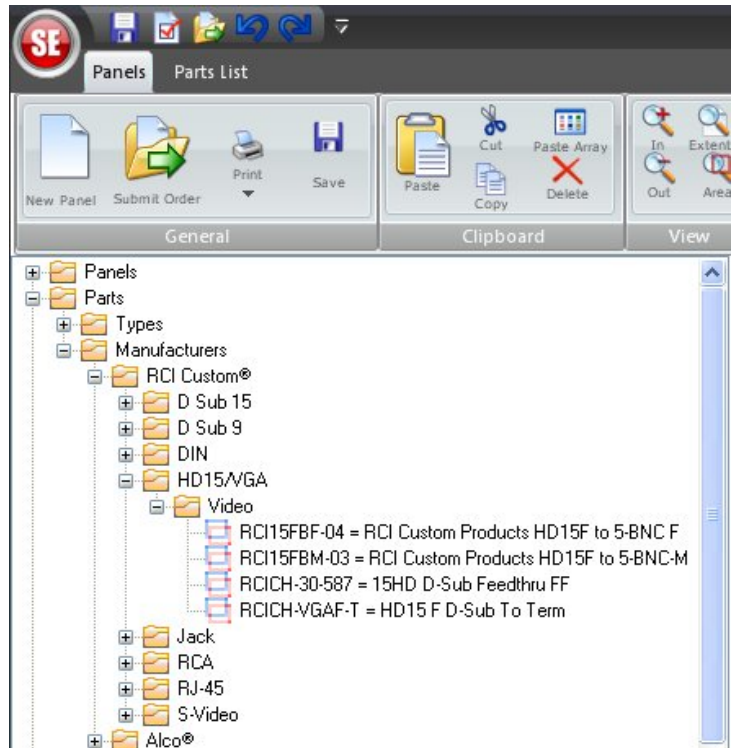
Choosing Panels and Parts

Panels and Parts may be selected by two different methods:

1. Drag any folder to the desktop, and use the Product Selection box to find an item

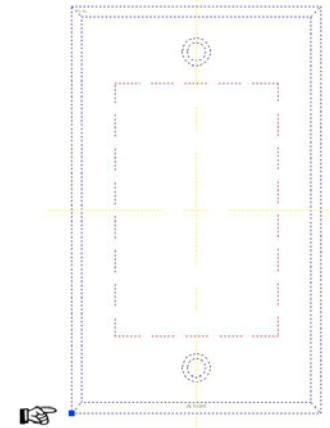


2. Open folders in the Product Tree by clicking the + on any folder to expand to an item



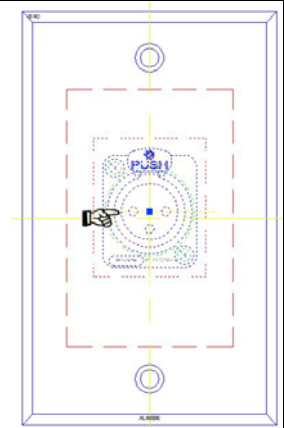
Select or Move Panels

- Left click on lower left corner to reveal Grab tab. Item is selected
- Grab and drag to relocate a panel
- Press Esc Key to deselect



Select or Move Parts or Engraving Text

- Left click on center of item to reveal Grab tab. Item is selected.
- Grab and drag to relocate part or engraving text
- Select a group of parts by drawing a box around them using the select tool
- Move a group by left clicking on a connector but away from the Grab tab

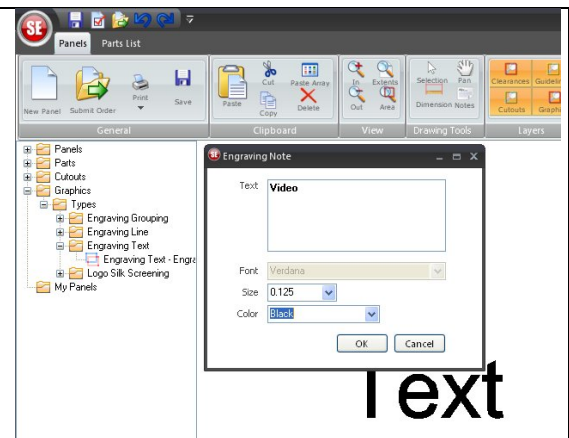


Release Panel or Part

- Press the **Esc** Key on your keyboard

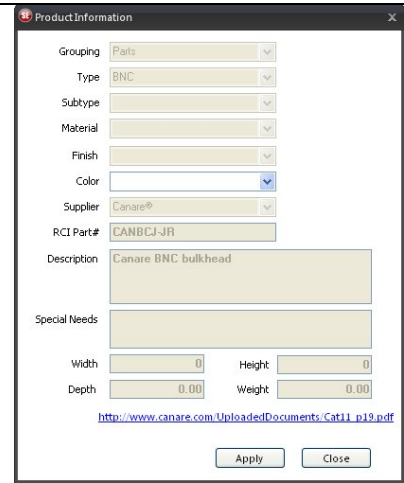
Engraving Text

- By expanding the Product Tree, **Graphics Folder >Types >Engraving Text**
- Drag the **Engraving Text** symbol to the work screen.
- TEXT will appear on screen. Place TEXT in approximate final position
- Enter text size and color in the text box and select ok.
- Text may be repositioned to complete the process.



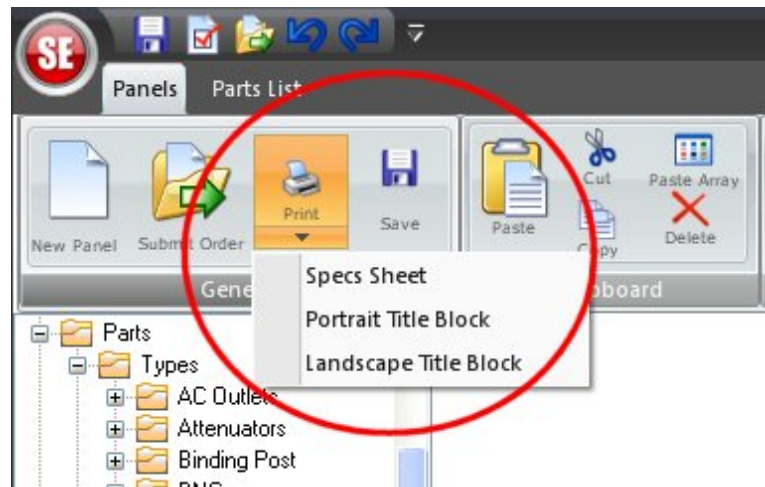
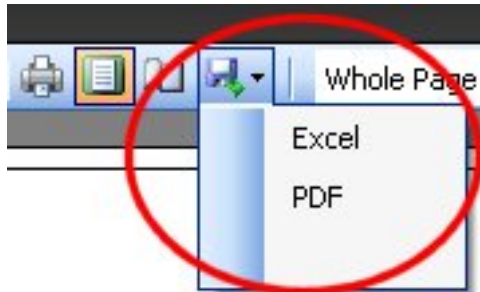
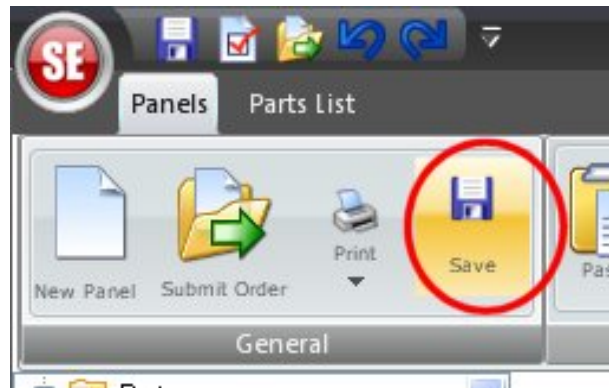
Product Info

- Select part and right click.
- Select **Product Info** from the drop down menu to see the product information and a link to the Spec Sheet (when available)



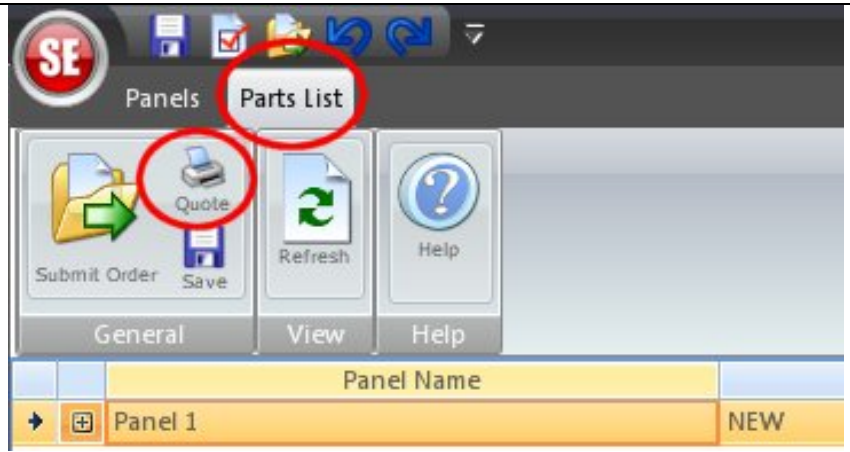
Print Panel Spec Sheet/Title Blocks

- Save Project
- Select Printer Icon from tool bar and choose report to view
- Print or save as PDF or Excel sheet



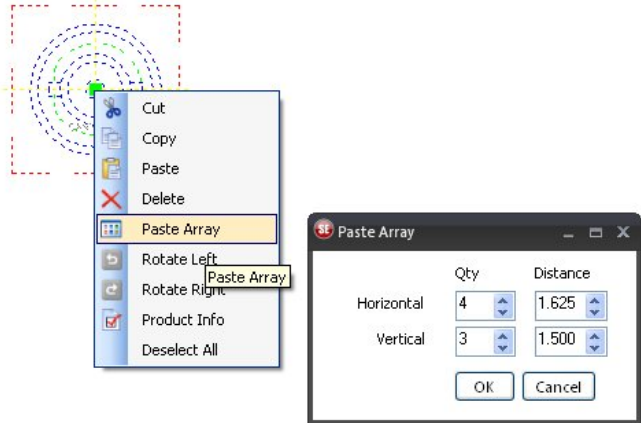
Print or Save a Quote

- Change work screen from **Panels** to **Parts List** using tabs in upper left corner.
- Select **Print Quote**
- When window opens, select **Print** or **Save**



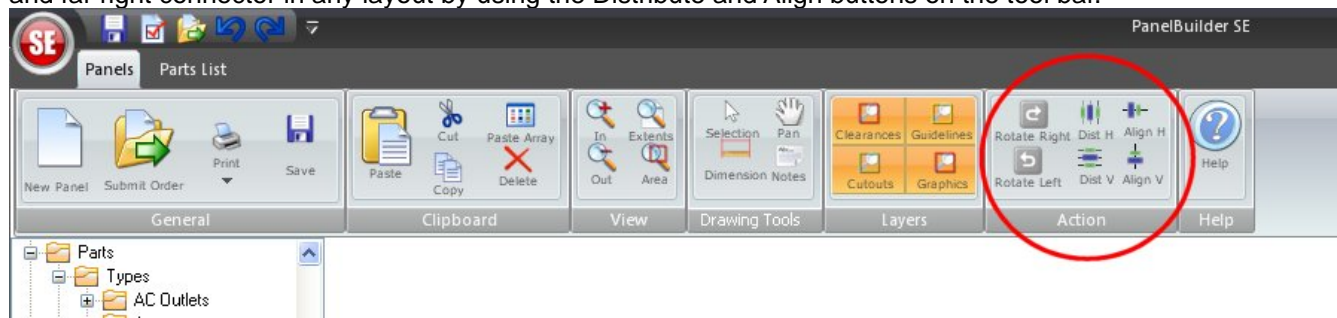
Paste Array of Connectors

- Select connector, right click and select **Paste Array** from Drop Down box.
- Fill in Qty. fields and Distance between connector centers, click on OK



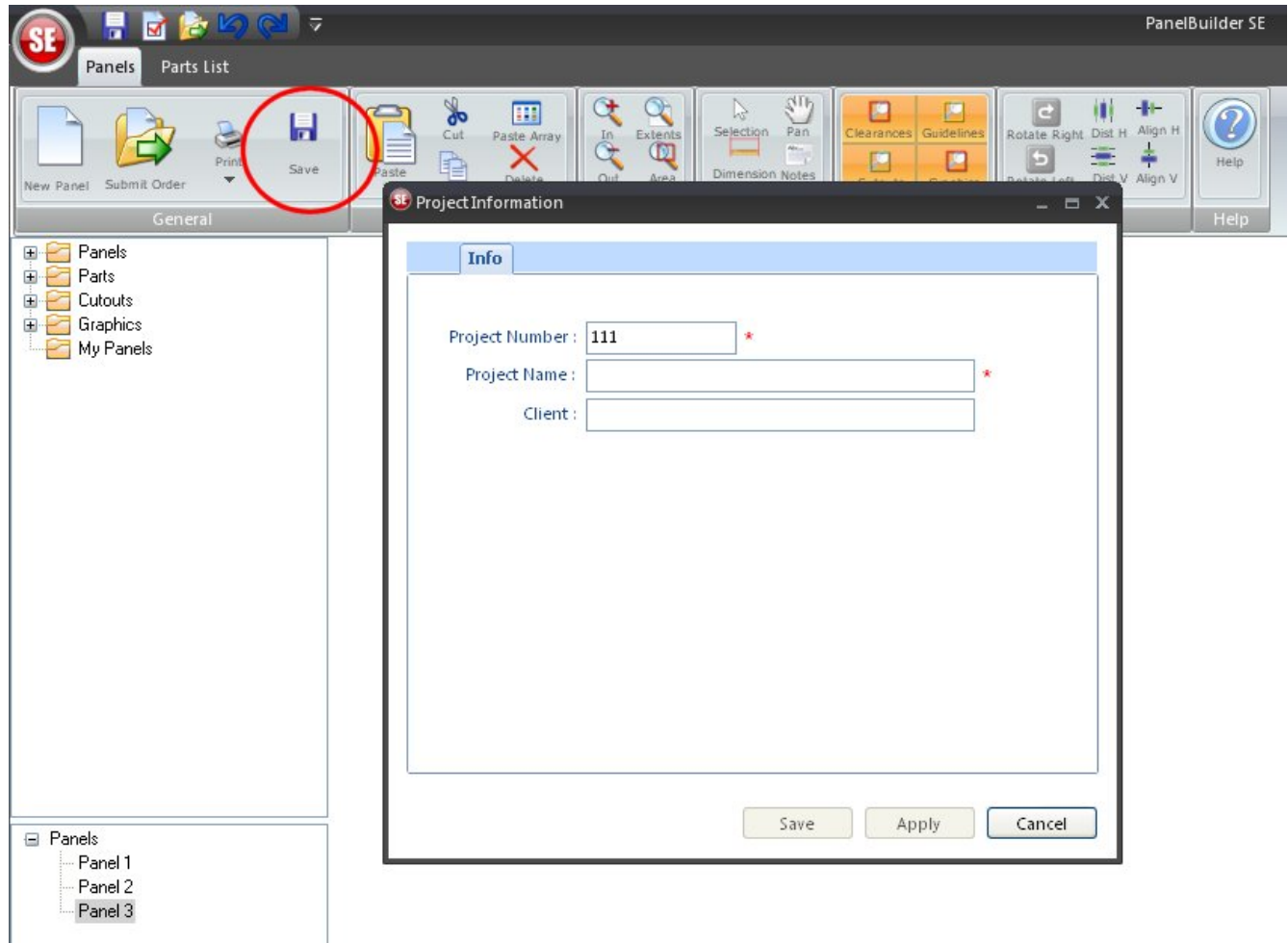
Aligning Connectors

Connectors may be aligned with one another horizontally or vertically, or distributed evenly between the far left and far right connector in any layout by using the Distribute and Align buttons on the tool bar.



- Select the connectors to be aligned or distributed either individually or as a group
- Click on the alignment button for the function you wish
- For the Distribute button, at least 3 objects must be selected

Saving Multiple Files as a Project



- From the top tool bar or the SE icon in the upper left corner, select **Save My Panel**.
- Complete the information in each field and **Save**
- Save subsequent panels to the same project